



# Installing MacBook Pro 15" Retina Display Mid 2012 SSD

Written By: Brett Hartt

## SUMMARY

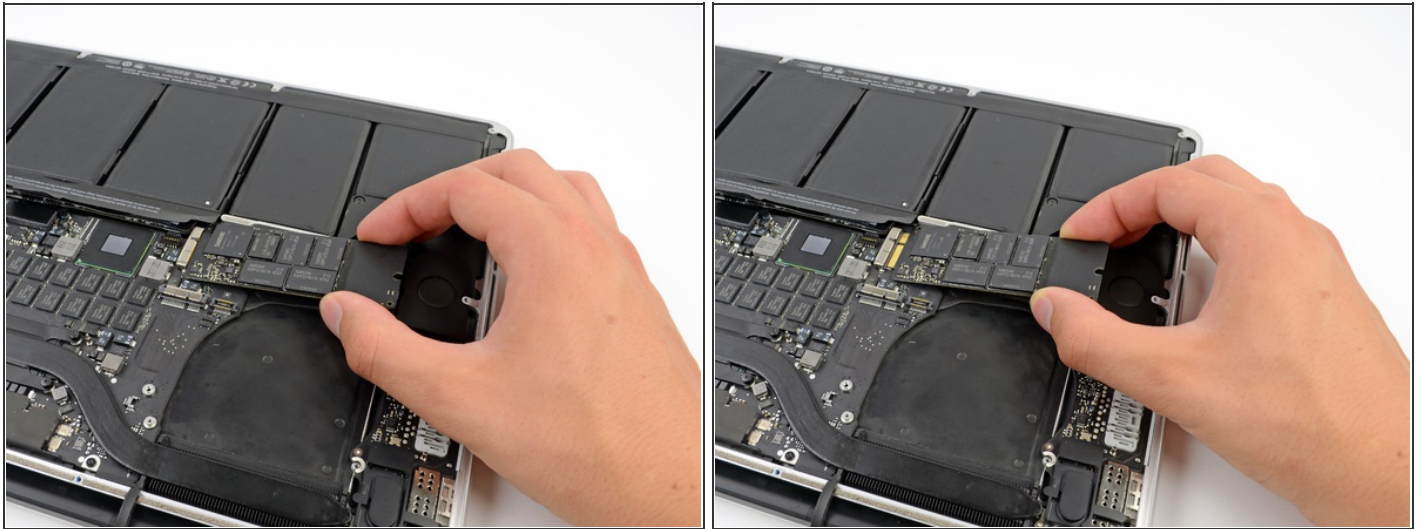
Pre-req only

### Step 1 — SSD



- Remove the single 3.1 mm T5 Torx screw securing the SSD to the logic board.

## Step 2



- Slightly lift the rightmost side of the SSD and firmly slide it straight away out of its socket on the logic board.

---

To reassemble your device, follow these instructions in reverse order.

This document was last generated on 2012-11-27 05:36:59 PM.